



## CONSTRUCTION SITES

Monitor your sites' nuisances to  
ensure safe and healthy  
environments for your employees

### Challenges

- Prevention of local complaints
- Representative sampling of activities
- Real-time monitoring of harmful emissions
- Guarantee safe and healthy working conditions

## Solutions

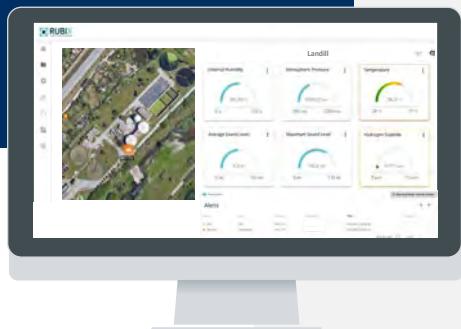


Network of connected monitoring devices equipped with a plume diffusion software

Real-time monitoring of all nuisance

Automatic triggering of alarms or remediation systems, such as misting ramps to reduce dust

## Benefits



Control the exposure to emissions in real-time



Ensure a healthy, safe and comfortable environment



Identify the sources of nuisances and address them quickly



Minimize the impact on nearby communities and avoid complaints



## Customer Application

## Context

Construction sites generate significant nuisances that impact the health and safety of employees as well as residents in the vicinity; becoming crucial the real-time monitoring of their environment

### Challenge

The monitoring of construction site nuisances is not done in real time, but by pre-construction impact studies. These audits misrepresent daily activities and fail to continuously monitor emissions of harmful gases and other nuisances. This lack of control not only impacts employees but neighborhoods nearby, increasing the number of local complaints that can lead to the stoppage of construction activities until the problem is solved and carrying extremely high costs that could have been avoided

### Solution

A network of WT1 devices equipped with a plume diffusion software can be set up around these sites. It allows the monitoring of nuisances in real-times and the automatic triggering of alarms or remediation systems, such as misting ramps to reduce dust

### Impact

Thanks to this connected network, the site manager will be able to protect his/her employees' health and safety, monitoring their exposure to different types of nuisances, such as dust or gases. Also, it allows to contest local complaints with objective data. In conclusion, you will ensure air quality and productivity in your workspace and reduce the harmful impact on the quality of life in the neighbourhoods nearby





**Leader in environmental intelligence for a  
healthier world, through environmental  
monitoring and source identification  
IoT technologies**