



PAPER MILL INDUSTRY

Control your emissions and
ensure a healthy environment
for employees and communities

Challenges

- Representative sampling of the activity
- Real-time emissions and odors analysis
- Management of odor control systems
- Prevention of local complaints



Solutions

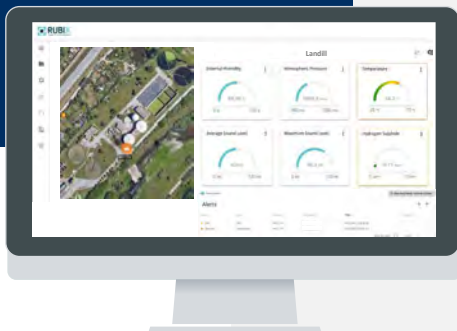


Network of connected devices providing real-time and continuous measurement of the environment

Monitoring and identification of emissions of odors and harmful gas compounds



Benefits



Ensure compliance with regulations (EN13725)



Anticipate production quality drifts and optimize processes



Standardize odor intensity quantification



Ensure safe and healthy environments for workers and close communities



Customer Application

Context

Paper mill sites' activities release harmful gas and odor emissions, affecting the health, well-being and comfort of employees as well as neighbouring communities

Challenge

These kind of sites are regularly audited in order to analyze in real-time the type and concentration of emissions, both at source and at the periphery. However, these audits do not monitor the environment continuously thus do not provide with a representative understanding and measurement of the activities as well as their production quality or emission peaks due to process drifts

Solution

A network of WT1 can be deployed in paper mill sites to provide with a continuous and real-time monitoring of gases and odors. This solution guarantees the respect of regulations such as the European Standard 13725, and facilitates the standardization of odor intensity quantification

Impact

This continuous-measurement network provided by RUBIX's connected devices allows site managers to better face drifts in production quality while better protecting their collaborators and reducing the impact of harmful emissions or odors on close neighbourhoods



**Leader in environmental intelligence for a
healthier world, through environmental
monitoring and source identification
IoT technologies**